

## HIGH SPEED STEEL SPOT WELD CUTTER

ICS

WIS

SPECIAL PURPOSE

DOUBLE ENDED CUTTER

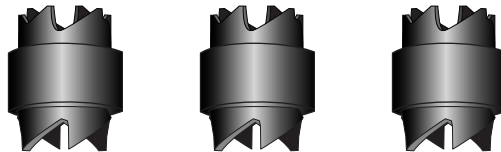
1/4" ARBOR



High Speed Steel Spot Weld Cutters are designed for removing spot welds without pre-drilling or punching. They separate body panels better than a panel cutter. Blades are reversible (twice as many holes may be cut) and are interchangeable with other spot weld cutters.

ITEM NO.	SIZE	ARBOR	STYLE	PRICE EACH
SWCTS 024	3/8	1/4	Double End	\$8.18

## HIGH SPEED STEEL SPOT WELD REPLACEMENT CUTTERS



High Speed Steel Spot Weld Replacement Cutter Blades are reversible (twice as many holes may be cut) and are interchangeable with other spot weld cutters. The long lasting high speed steel cutter outlasts tool steel style cutters.

ITEM NO.	SIZE	ARBOR	STYLE	PRICE EACH
SWRC 024	3/8	1/4	Double End	\$5.84

## HIGH SPEED STEEL 9 PC SPOT WELD CUTTER SET

METAL CASE

The High Speed Steel 9 Piece Spot Weld Cutter Set was designed for the auto body repair trade for removing spot welds on thin sheet metal, aluminum, and other metals.

	DESCRIPTION	ITEM NO.	PRICE
<b>9 PC SPOT WELD CUTTER SET</b> 	Each set contains:  1 hex shank 3/8" dia. spot weld cutter 5 extra replacement cutters 2 extra center pins 1 5/16" dia. cobalt spot weld drill	SWCS-HS-9	\$45.00